

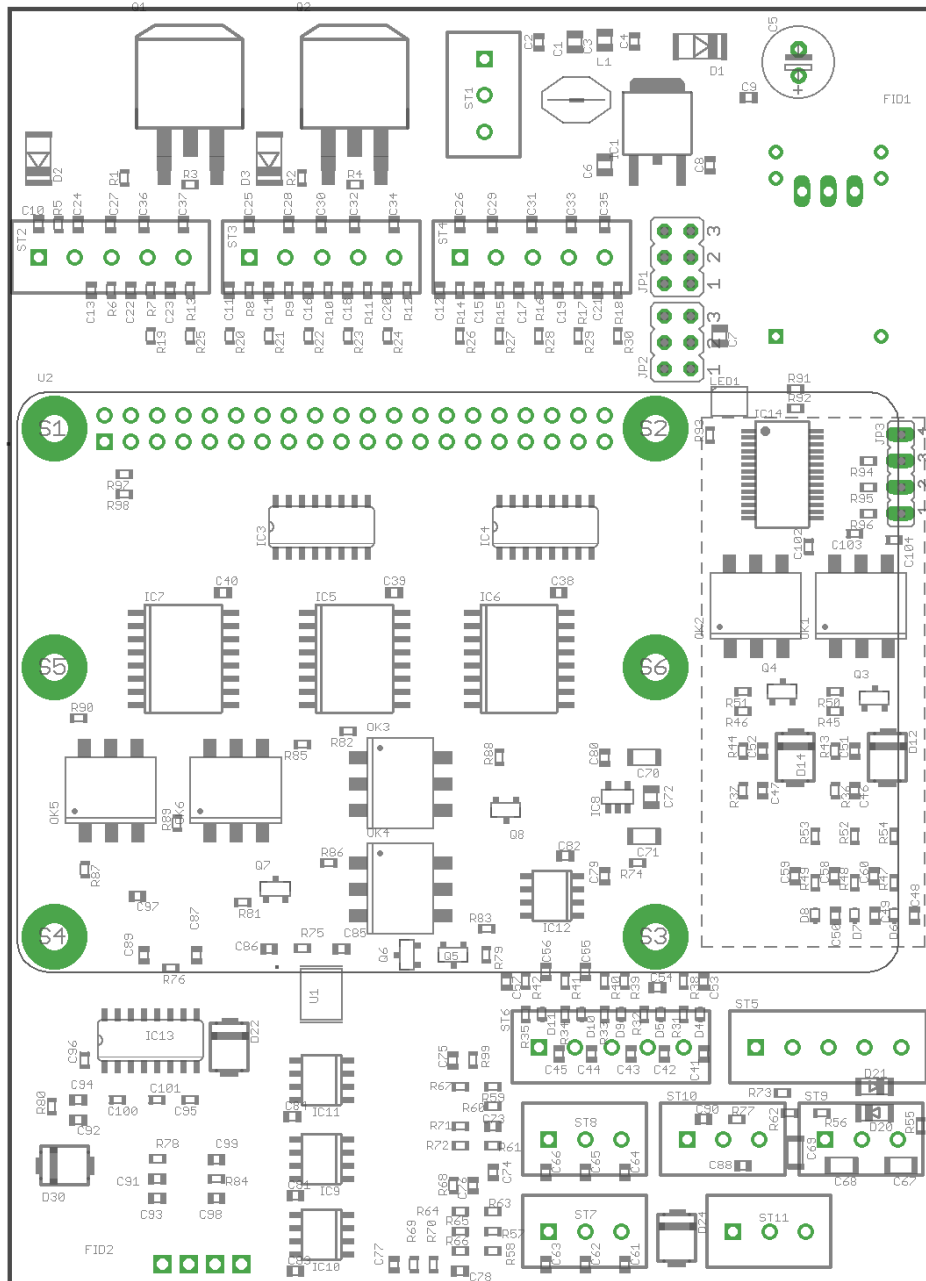
HAM radio controller for the Raspberry Pi

Assembly plan

not all components have to be assembled for every application. You only equip what you really need.

Top side (TOP Layer): all SMD components

Underside (BOTTOM Layer): all plugs, voltage converters and the Raspberry Pi



From:

<http://projects.dj0abr.de/> - **DJ0ABR Projects**

Permanent link:

http://projects.dj0abr.de/doku.php?id=en:rpictlbrd:ctlbrd_bestplan

Last update: **2021/03/11 17:59**

