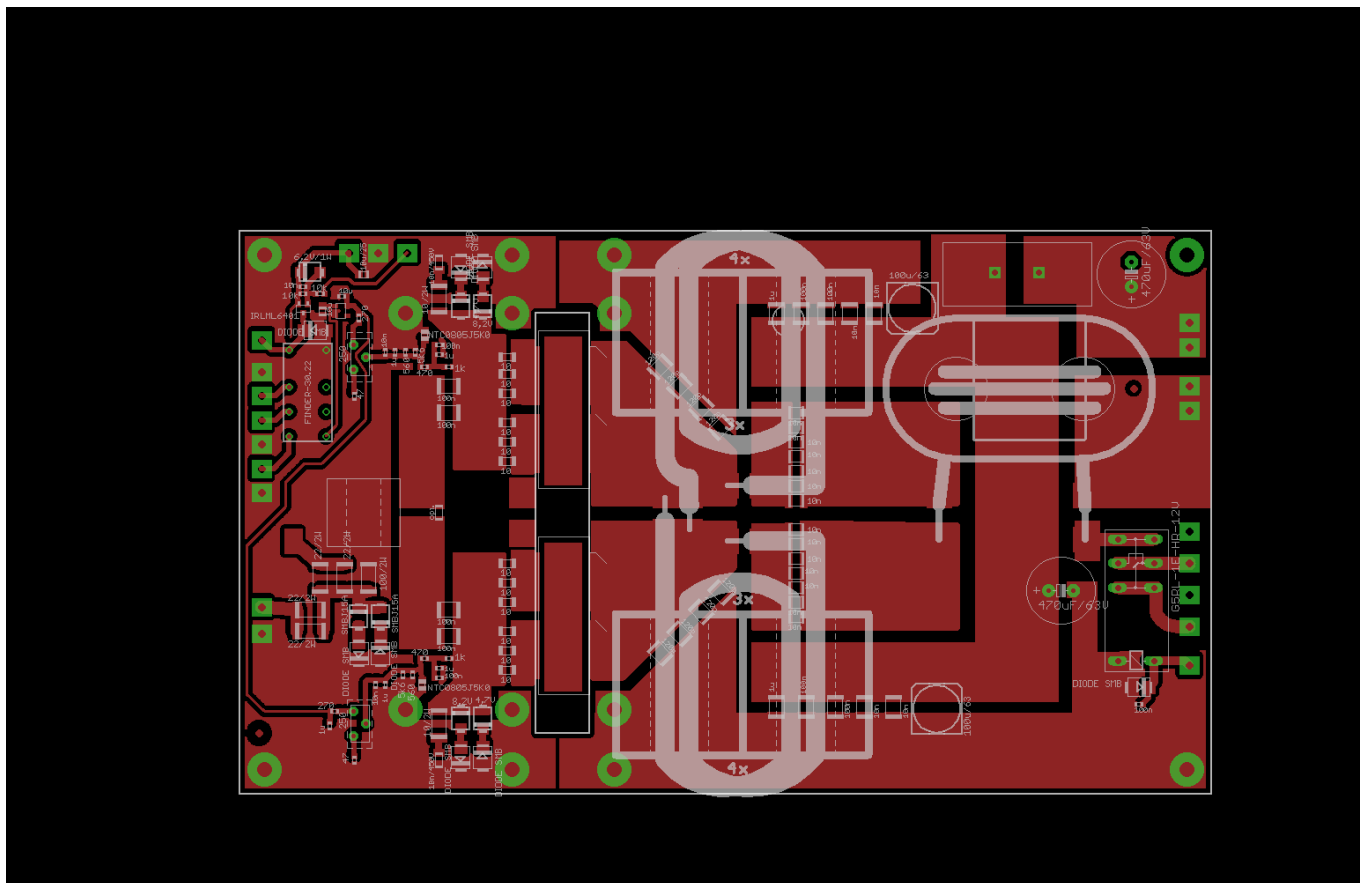


1kW LDMOSFET power amplifier for shortwave

Component layout diagram

(click several times to enlarge)



From:
<http://projects.dj0abr.de/> - DJ0ABR Projects

Permanent link:
http://projects.dj0abr.de/doku.php?id=en:kwldmospa:kwpa_pcb

Last update: 2021/04/01 23:25

