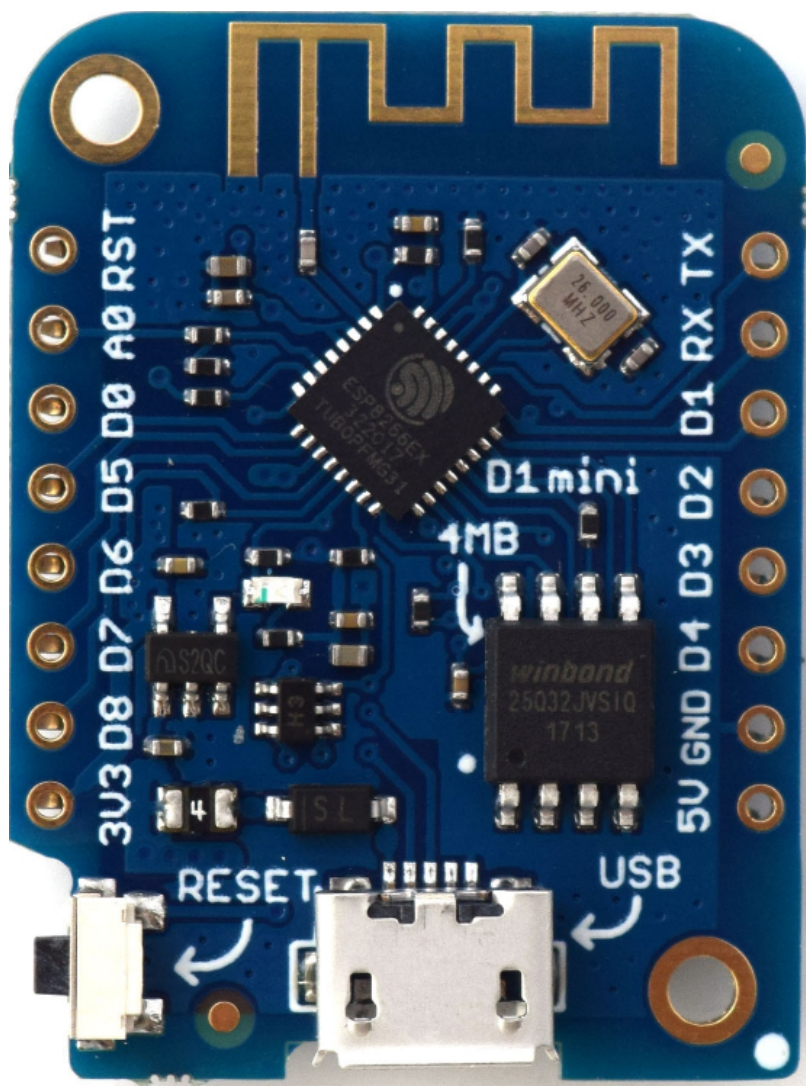


# CNC warning light

## Controller

I use an ESP8266 D1 Mini Board, but almost any other ESP8266 or ESP32 controller will work, you just have to change the GPIO numbers.



To control the on/off lines of the warning light I use the outputs D5, D6 and D7 (see firmware).

Connections:

Controller	Light
D5	Yellow on/off
D6	Green on/off
D7	Red on/off
GND	black cable (minus)

From:

<http://projects.dj0abr.de/> - **DJ0ABR Projects**

Permanent link:

<http://projects.dj0abr.de/doku.php?id=en:ampel:controller>



Last update: **2022/01/10 00:31**